



Manufacturers of Dynamic® and Adjusto Spede® Products

---

7900 Durand Avenue, P.O. Box 0361  
Sturtevant, Wisconsin, U.S.A. 53177  
Tel.: 262.554.7977 Fax: 262.554.7041  
Toll Free: 1.800.548.2169  
E-mail: [sales@drivesourceusa.com](mailto:sales@drivesourceusa.com)  
Website: [www.drivesourceusa.com](http://www.drivesourceusa.com)

## Brakes

---

**Models 303 to 315**

*Application Engineering ✦ Quality Products ✦ Total Solution*

**Model 303 Brake Per FC-303055**

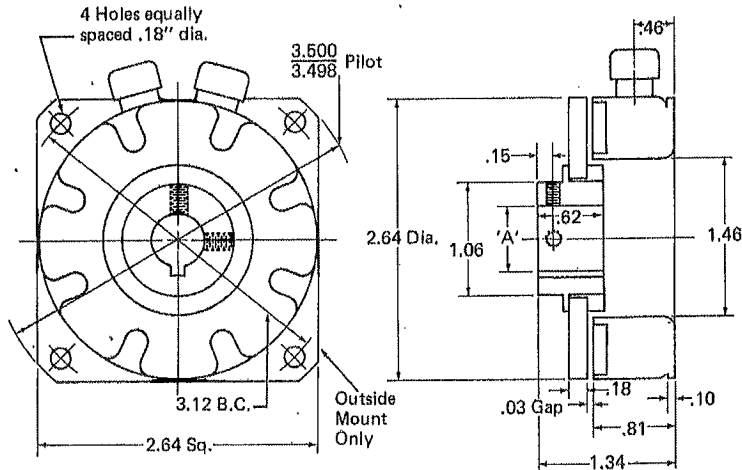
**Technical Data**

Static Torque . . . . .	5 lb. ft.	Weight: Armature . . . . .	.181 lb.
Maximum Speed . . . . .	7000 RPM	Field . . . . .	.53 lb.
Coil Voltage . . . . .	90 vdc	Inertia: Armature . . . . .	.202 lb. in. <sup>2</sup>
Rated Current . . . . .	.104 amps		

**Model 303 - Torque at Various RPM Points:**

RPM	0	900	1200	1800	2400	3000	3600	4000	5000	6000	7000
Lb. Ft.	5.0	3.6	3.5	3.2	2.9	2.7	2.5	2.4	2.2	2.0	1.8

Refer to Section K for torque and heat dissipation curves.

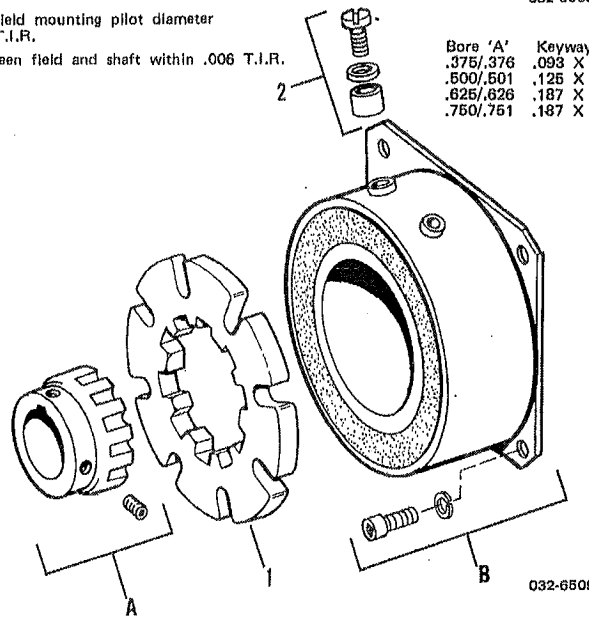


**Customer Must Maintain:**

1. Concentricity between field mounting pilot diameter and shaft within .006 T.I.R.
2. Angular alignment between field and shaft within .006 T.I.R.

032-6508

Bore 'A'	Keyway
.375/.376	.093 X .046
.500/.501	.125 X .062
.625/.626	.187 X .094
.750/.751	.187 X .094



**Brake  
 Model 303**

- Primary Field
- Spline Drive

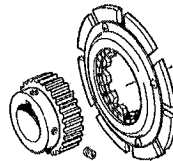
**Model 303 Brake Per FC-303055**

Item	Qty.	Part No.	Description
<b>Major Parts</b>			
1	1	303390-2	Armature Plate
2	1	326147	Magnet Accessories
A	1		Armature Hub Assembly
A-3		303451-1	.375/.376 bore
A-5		303451-3	.500/.501 bore
A-7		303451-5	.625/.626 bore
A-9		303453-8	.750/.751 bore
B	1		Field Magnet Assembly
B-1		303351	6 volts
B-3		303353	24 volts
B-4		303354	90 volts

- To Order, Specify:**
1. Brake
  2. Bore of Item A
  3. Voltage of Item B
  4. Controller from Section H

- Example:**
- Brake per FC-303055  
 ½" bore  
 90 volts  
 Controller Model Number

For adjustable gap armature plate and hubs, refer to Section J.



**Note:**  
 Consult the factory for other bores and voltages.  
 Data subject to change without notice.

### Model 303 Brake Per FC-303061

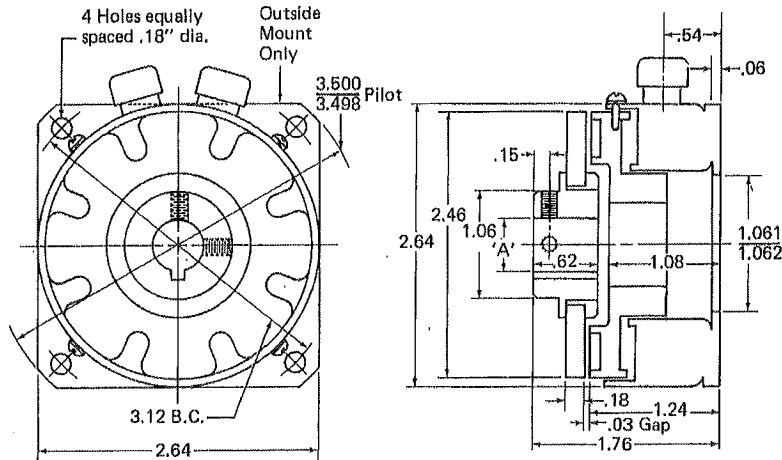
#### Technical Data

Static Torque .....	5 lb. ft.	Weight: Armature .....	.153 lb.
Maximum Speed .....	7000 RPM	Field .....	.855 lb.
Coil Voltage .....	90 vdc	Inertia: Armature .....	.150 lb. in. <sup>2</sup>
Rated Current .....	.104 amps		

#### Model 303 - Torque at Various RPM Points

RPM	0	900	1200	1800	2400	3000	3600	4000	5000	6000	7000
Lb. Ft.	5.0	3.6	3.5	3.2	2.9	2.7	2.5	2.4	2.2	2.0	1.8

Refer to Section K for torque and heat dissipation curves.

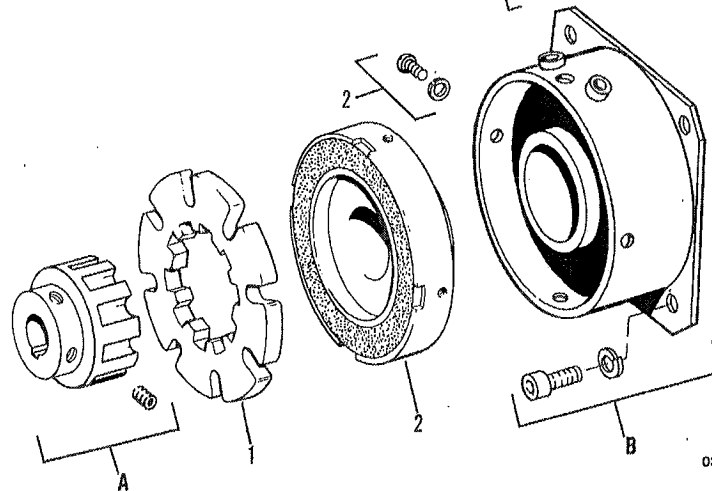


032-6610

#### Customer Must Maintain:

1. Concentricity between field mounting pilot diameter and shaft within .006 T.I.R.
2. Angular alignment between field and shaft within .006 T.I.R.

Bore 'A'	Keyway
.375/.376	.093 X .046
.500/.501	.125 X .062
.625/.626	.187 X .094
.750/.751	.187 X .094



032-6611

**Brake  
 Model 303-R**

- Replaceable Face
- Spline Drive

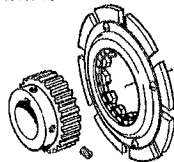
**Model 303 Brake Per FC-303061**

Item	Qty.	Part No.	Description
<b>Major Parts</b>			
1	1	303391	Armature Plate
2	1	303561-11	Replaceable Face Assembly
3	1	326147	Magnet Accessories
A	1		Armature Hub Assembly
A-3		303451-1	.375/.376 bore
A-5		303451-3	.500/.501 bore
A-7		303451-5	.625/.626 bore
A-9		303453-8	.750/.751 bore
B	1		Field Magnet Assembly
B-1		303321	6 volts
B-3		303323	24 volts
B-4		303324	90 volts

**To Order, Specify:**  
 1. Brake  
 2. Bore of Item A  
 3. Voltage of Item B  
 4. Controller from Section H

**Example:**  
 Brake per FC-303061  
 ½" bore  
 90 volts  
 Controller Model Number

For adjustable gap armature plate and hubs, refer to Section J.



**Note;**  
 Consult the factory for other bores and voltages.  
 Data subject to change without notice.

### Model 304 Brake Per FC-304055

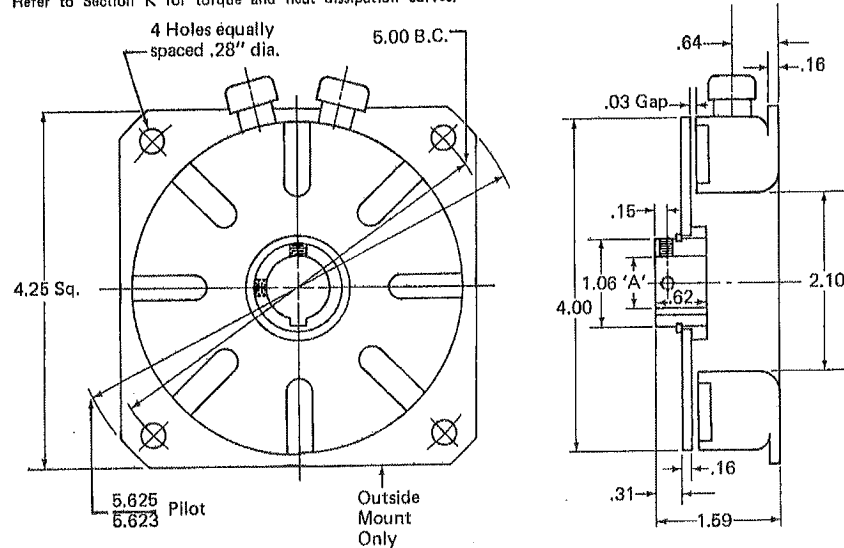
#### Technical Data

Static Torque . . . . .	22.0 lb. ft.	Weight: Armature & Hub . . . . .	.538 lb.
Maximum Speed . . . . .	4000 RPM	Field . . . . .	2.0 lb.
Coil Voltage . . . . .	90 vdc	Inertia: Armature & Hub . . . . .	.919 lb. in. <sup>2</sup>
Rated Current . . . . .	.125 amp		

#### Model 304 - Torque at Various RPM Points

RPM	0	300	600	900	1200	1500	1800	2400	3000	3600	4000
Lb. Ft.	22	18	16	15	14	13	13	12	11	10	10

Refer to Section K for torque and heat dissipation curves.

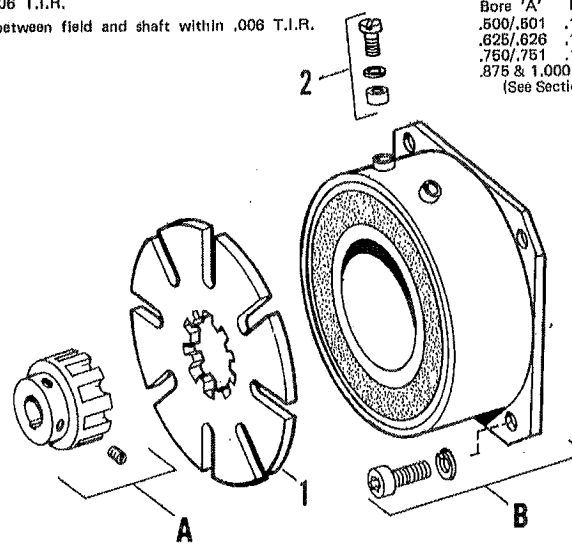


032-6512

#### Customer Must Maintain:

1. Concentricity between field mounting pilot diameter and shaft within .006 T.I.R.
2. Angular alignment between field and shaft within .006 T.I.R.

Bore 'A'	Keyway
.500/.501	.125 X .062
.625/.626	.187 X .094
.750/.751	.187 X .094
.875 & 1.000 bores (See Section J)	



032-6513

**Brake  
 Model 304**

- Primary Field
- Spline Drive

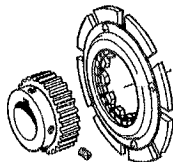
**Model 304 Brake Per FC-304055**

Item	Qty.	Part No.	Description
<b>Major Parts</b>			
1	1	304390-11	Armature Plate
2	1	326146	Magnet Accessories
A	1		Armature Hub Assembly†
A-5		303451-3	.500/.501 bore
A-7		303451-5	.625/.626 bore
A-9		303453-8	.750/.751 bore
B	1		Field Magnet Assembly
B-1		304351	6 volts
B-3		304353	24 volts
B-4		304354	90 volts

**To Order, Specify:**  
 1. Brake  
 2. Bore of Item A  
 3. Voltage of Item B  
 4. Controller from Section H

**Example:**  
 Brake per FC-304055  
 ¾" bore  
 90 volts  
 Controller Model Number

For adjustable gap armature plate and hubs, refer to Section J.



† For 7/8" & 1" bore sizes, refer to Section J.

**Note:**  
 Consult the factory for other bores and voltages.  
 Data subject to change without notice.

### Model 304 Brake Per FC-304061

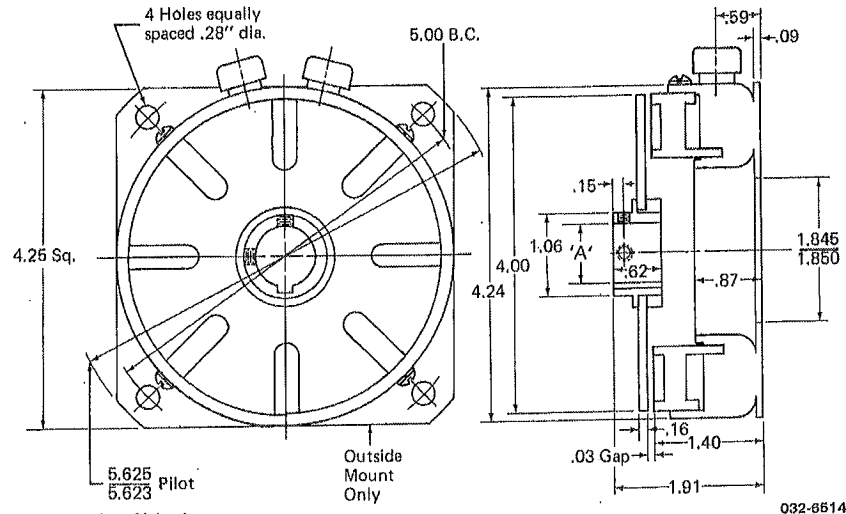
#### Technical Data

Static Torque .....	22 lb. ft.	Weight: Armature & Hub .....	.538 lb.
Maximum Speed .....	4000 RPM	Field .....	2.46 lb.
Coil Voltage .....	90 vdc	Inertia: Armature & Hub .....	.919 lb. in. <sup>2</sup>
Rated Current .....	.125 amps		

#### Model 304 - Torque at Various RPM Points

RPM	0	300	600	900	1200	1500	1800	2400	3000	3600	4000
Lb. Ft.	22	18	16	15	14	13	13	12	11	10	10

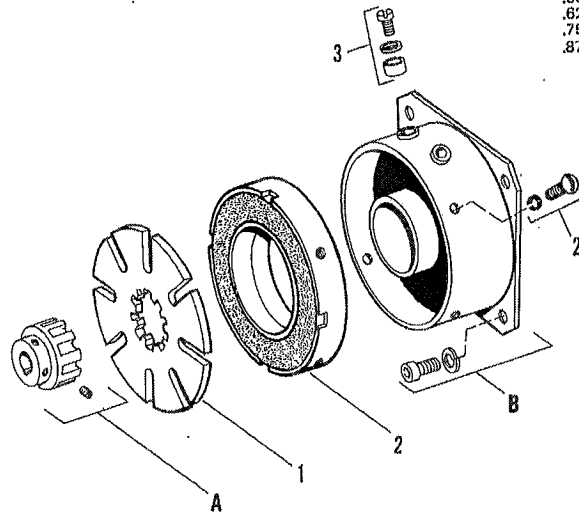
Refer to Section K for torque and heat dissipation curves.



Customer Must Maintain:

1. Concentricity between field mounting pilot diameter and shaft within .006 T.I.R.
2. Angular alignment between field and shaft within .006 T.I.R.

Bore 'A'	Keyway
.500/.501	.125 X .062
.625/.626	.187 X .094
.750/.751	.187 X .094
.875 & 1.000 bores (See Section J)	



**Brake  
 Model 304-R**

- Replaceable Face
- Spline Drive

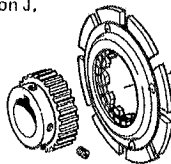
**Model 304 Brake Per FC-304061**

Item	Qty.	Part No.	Description
<b>Major Parts</b>			
1	1	304390-11	Armature Plate
2	1	304561-4	Replaceable Face Assembly
3	1	326146	Magnet Accessories
A	1		Armature Hub Assembly†
A-5		303451-3	.500/.501 bore
A-7		303451-5	.625/.626 bore
A-9		303453-8	.750/.751 bore
B	1		Field Magnet Assembly
B-1		304321	6 volts
B-3		304323	24 volts
B-4		304324	90 volts

- To Order, Specify:**
1. Brake
  2. Bore of Item A
  3. Voltage of Item B
  4. Controller from Section H

**Example:**  
 Brake per FC-304061  
 ¾" bore  
 90 volts  
 Controller Model Number

For adjustable gap armature plate and hubs, refer to Section J.



† For 7/8" & 1" bore sizes, refer to Section J.

**Note:**  
 Consult the factory for other bores and voltages.  
 Data subject to change without notice.

### Model 304 Shaft Mounted Brake Per FC-304090

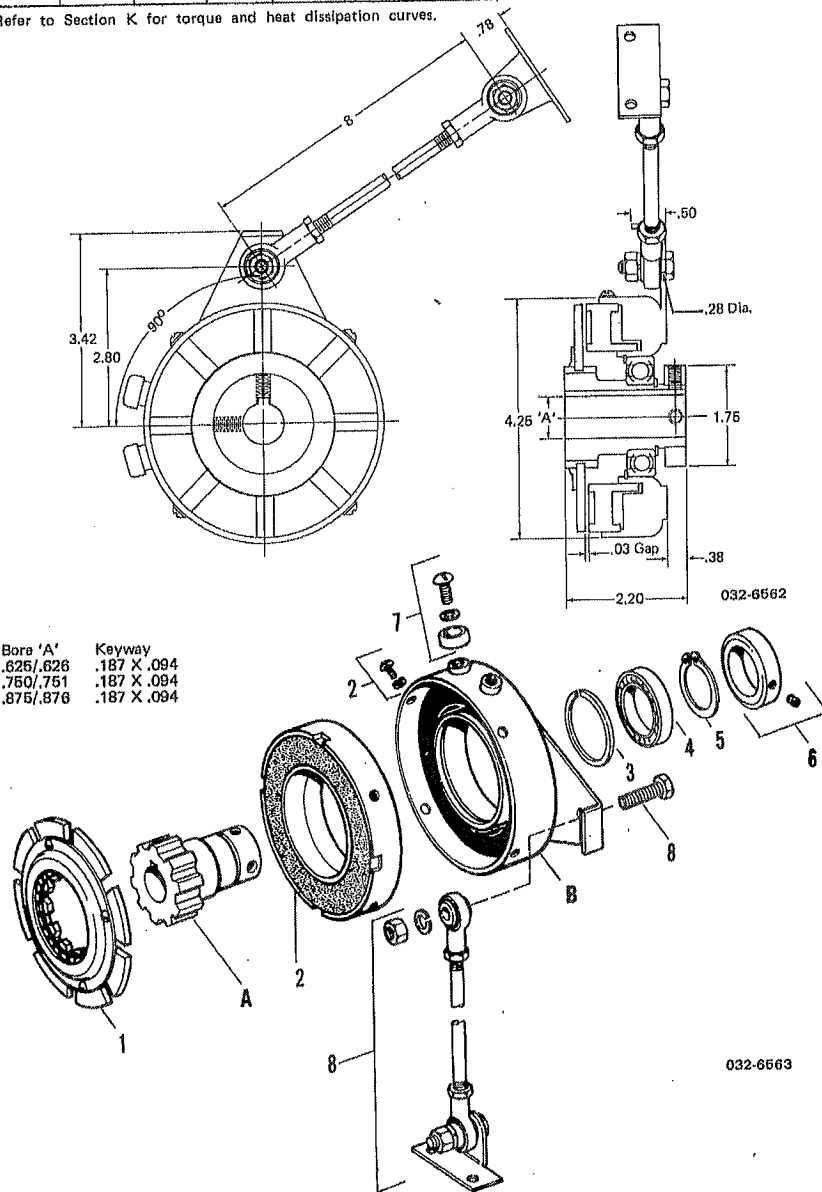
#### Technical Data

Static Torque . . . . .	22 lb. ft.	Weight: Armature & Hub . . . .	1.13 lb.
Maximum Speed . . . . .	4000 RPM	Field & Repl. Face . . . .	2.38 lb.
Coil Voltage . . . . .	90 vdc	Total Unit Weight . . . . .	3.77 lb.
Rated Current . . . . .	.125 amps	Inertia: Armature & Hub . . . .	1.117 lb. in. <sup>2</sup>

#### Model 304 - Torque at Various RPM Points

RPM	0	300	600	900	1200	1500	1800	2400	3000	3600	4000
Lb. Ft.	22	18	16	15	14	13	13	12	11	10	10

Refer to Section K for torque and heat dissipation curves.





Manufacturers of Dynamic® and Adjusto Spede® Products

7900 Durand Avenue, P.O. Box 0361  
 Sturtevant, Wisconsin, U.S.A. 53177  
 Tel.: 262.554.7977 Fax: 262.554.7041  
 Toll Free: 1.800.548.2169  
 E-mail: sales@drivesourceusa.com  
 Website: www.drivesourceusa.com

**Shaft Mounted Brake  
 Model 304**

- Stationary Field
- Bearing Mounted
- Replaceable Face
- Spline Drive

**Model 304 Shaft Mounted Brake Per FC-304090**

Item	Qty.	Part No.	Description
<b>Major Parts</b>			
Shaft Mounted Brake			
		FC-304090-0002	6 volts, .625/.626 bore
		FC-304090-0003	6 volts, .750/.751 bore
		FC-304090-0004	6 volts, .875/.876 bore
		FC-304090-0010	24 volts, .625/.626 bore
		FC-304090-0011	24 volts, .750/.751 bore
		FC-304090-0012	24 volts, .875/.876 bore
		FC-304090-0014	90 volts, .625/.626 bore
		FC-304090-0015	90 volts, .750/.751 bore
		FC-304090-0016	90 volts, .875/.876 bore
<b>Service Parts</b>			
1	1	304396-8	Armature Plate Assembly
2	1	304561-5	Replaceable Face Assembly
3	1	DY 10860	Retaining Ring (internal)
4	1	DY 11500	Bearing
5	1	DY 1102	Retaining Ring (external)
6	1	326519-1	Collar
7	1	326146	Magnet Accessories
<b>Splined Sleeve</b>			
A	1		
A-7		304455-2	.625/.626 bore
A-9		304455-3	.750/.751 bore
A-11		304455-4	.875/.876 bore
<b>Field Magnet Assembly</b>			
B	1		
B-1		304331-2	6 volts
B-3		304333-2	24 volts
B-4		304334-2	90 volts
<b>Optional Parts</b>			
8	1	326556-0001	Torque Arm Assembly

**To Order, Specify:**  
 1. Shaft Mounted Brake  
 2. Controller from Section H

**Example:**  
 Brake per FC-304090-0015  
 (90 volts, .750/.751 bore)  
 Controller Model Number

**Note:**  
 Consult the factory for other bores and voltages.  
 Data subject to change without notice.

*Application Engineering ✦ Quality Products ✦ Total Solution*

**Model 305 Brake Inside Mounted Per FC-305050**  
**Model 305 Brake Outside Mounted Per FC-305051**

**Technical Data**

Static Torque . . . . . 67 lb. ft.  
 Maximum Speed . . . . . 4000 RPM  
 Coil Voltage . . . . . 90 vdc  
 Rated Current . . . . . .409 amp

**Weight: Armature, Hub & Split**

Taper Bushing . . . . . 3.13 lb.  
 Field (Inside Mtd.) . . . . 3.18 lb.  
 (Outside Mtd.) . . . . 3.36 lb.

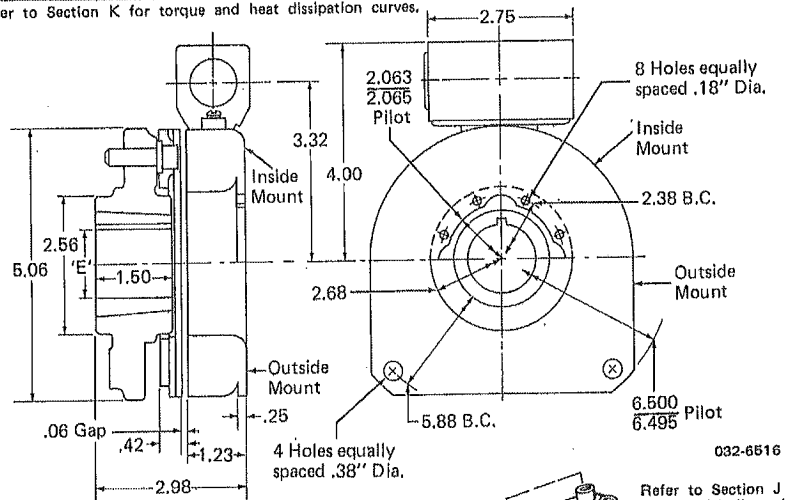
**Inertia: Armature, Hub & Split**

Taper Bushing . . . . . .067 lb. ft.<sup>2</sup>

**Model 305 - Torque at Various RPM Points**

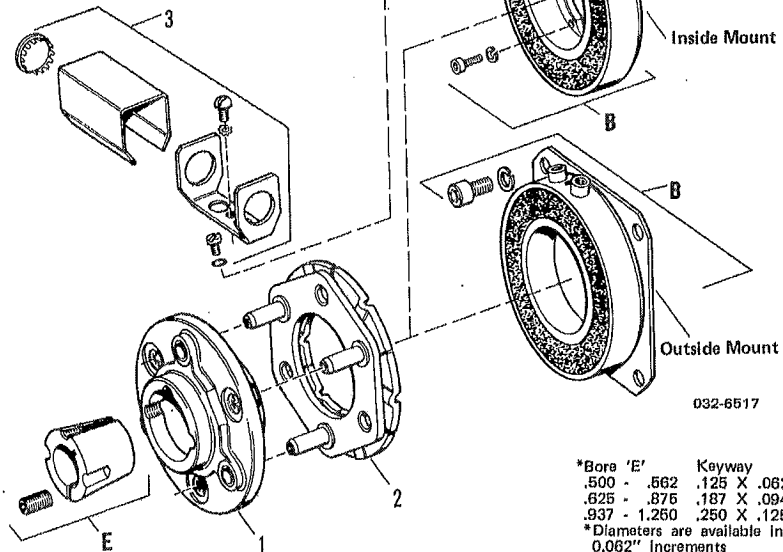
RPM	0	300	600	900	1200	1500	1800	2400	3000	3600	4000
Lb. Ft.	57	52	47	43	39	35	32	27	24	21	20

Refer to Section K for torque and heat dissipation curves.



**Customer Must Maintain:**

1. Concenterlity between shafts within .010 T.I.R.
2. Angular alignment of shafts within .010 T.I.R.
3. Composite of both within .010 T.I.R.





Manufacturers of Dynamic® and Adjusto Spede® Products

7900 Durand Avenue, P.O. Box 0361  
Sturtevant, Wisconsin, U.S.A. 53177  
Tel.: 262.554.7977 Fax: 262.554.7041  
Toll Free: 1.800.548.2169  
E-mail: sales@drivesourceusa.com  
Website: www.drivesourceusa.com

**Brake  
Model 305**

- Primary Field
- Pin Drive

**Model 305 Brake Inside Mounted Per FC-305050**  
**Model 305 Brake Outside Mounted Per FC-305051**

Item	Qty.	Part No.	Description
<b>Major Parts</b>			
1	1	305460	Armature Hub Assembly
2	1	305381	Armature Plate Assembly
3	1	326143	Brake Magnet Accessories
B	1		Field Magnet Assembly
B-11		305341	6 volts, inside mounted
B-14		305344	90 volts, inside mounted
			Field Magnet Assembly
B-21		305351	6 volts, outside mounted
B-24		305354	90 volts, outside mounted
E	1	326068	Split Taper Bushing (See note below)

**To Order, Specify:**  
1. Inside or Outside Mounted Brake  
2. Bore of Item E  
3. Voltage of Item B  
4. Controller from Section H

**Example:**  
Outside Mounted Brake per FC-305051  
1" bore  
90 volts  
Controller Model Number

**Note:**  
Refer to Section J for split taper bushing bores.  
Consult the factory for other voltages.  
Data subject to change without notice.

*Application Engineering ✦ Quality Products ✦ Total Solution*

**Model 305 Brake Inside Mounted Per FC-305054**  
**Model 305 Brake Outside Mounted Per FC-305055**

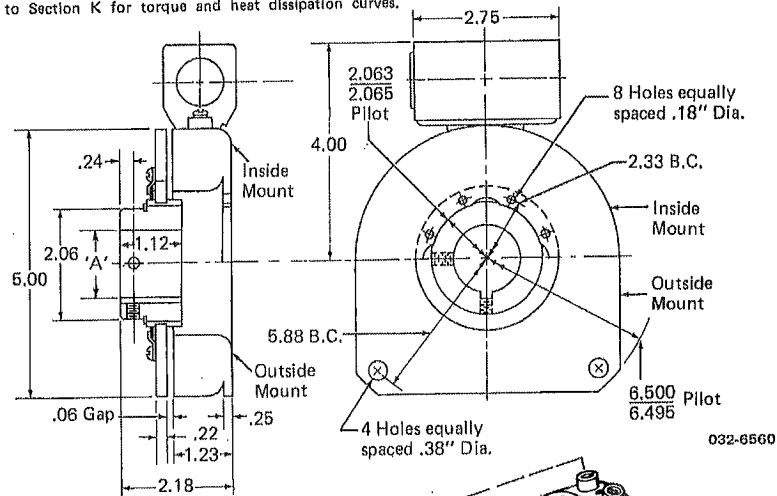
**Technical Data**

Static Torque . . . . .	57 lb. ft.	Weight: Armature & Hub . . . . .	1.73 lb.
Maximum Speed . . . . .	4000 RPM	Field (Inside Mtd.) . . . . .	3.18 lb
Coil Voltage . . . . .	90 vdc	(Outside Mtd.) . . . . .	3.36 lb.
Rated Current . . . . .	.409 amp	Inertia: Armature & Hub . . . . .	.034 lb. ft. <sup>2</sup>

**Model 305 - Torque at Various RPM Points**

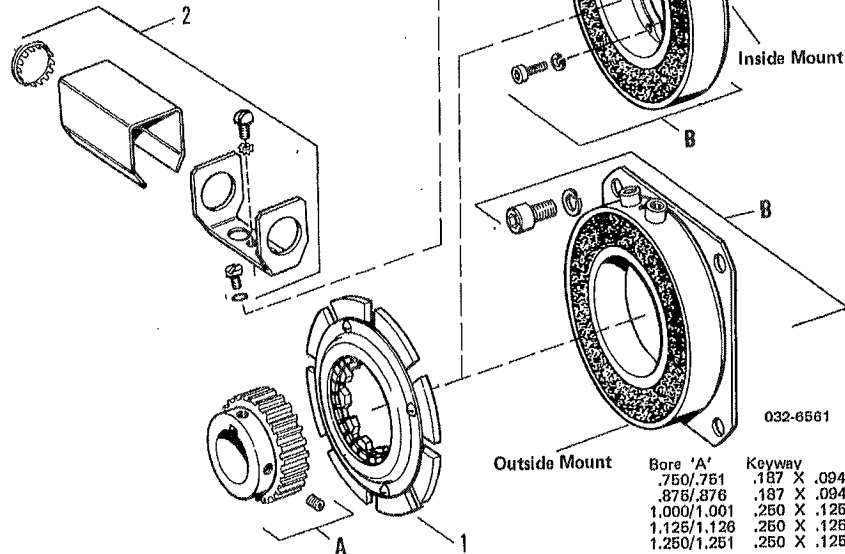
RPM	0	300	600	900	1200	1500	1800	2400	3000	3600	4000
Lb. Ft.	57	52	47	43	39	35	32	27	24	21	20

Refer to Section K for torque and heat dissipation curves.



**Customer Must Maintain:**

1. Concentricity between shafts within .010 T.I.R.
2. Angular alignment of shafts within .010 T.I.R.
3. Composite of both within .010 T.I.R.



Bore 'A'	Keyway
.750/.751	.187 X .094
.875/.876	.187 X .094
1.000/1.001	.250 X .125
1.125/1.128	.250 X .125
1.250/1.251	.250 X .125

**Brake  
 Model 305**

- Primary Field
- Spline Drive

**Model 305 Brake Inside Mounted Per FC-305054  
 Model 305 Brake Outside Mounted Per FC-305055**

Item	Qty.	Part No.	Description
<b>Major Parts</b>			
1	1	305396-1	Armature Plate Assembly
2	1	326143	Brake Magnet Accessories
A	1		Armature Hub Assembly
A-9		305453-1	.750/.751 bore
A-11		305453-2	.875/.876 bore
A-13		305453-3	1.000/1.001 bore
A-15		305453-4	1.125/1.126 bore
A-17		305453-5	1.250/1.251 bore
B	1		Field Magnet Assembly
B-11		305341	6 volts, inside mounted
B-14		305344	90 volts, inside mounted
			Field Magnet Assembly
B-21		305351	6 volts, outside mounted
B-24		305354	90 volts, outside mounted

**To Order, Specify:**  
 1. Inside or Outside Mounted Brake  
 2. Bore of Item A  
 3. Voltage of Item B  
 4. Controller from Section H

**Example:**  
 Outside Mounted Brake per FC-305055  
 1" bore  
 90 volts  
 Controller Model Number

**Note:**  
 Consult the factory for other bores and voltages.  
 Data subject to change without notice.

**Model 308 Brake Inside Mounted Per FC-308050**  
**Model 308 Brake Outside Mounted Per FC-308051**

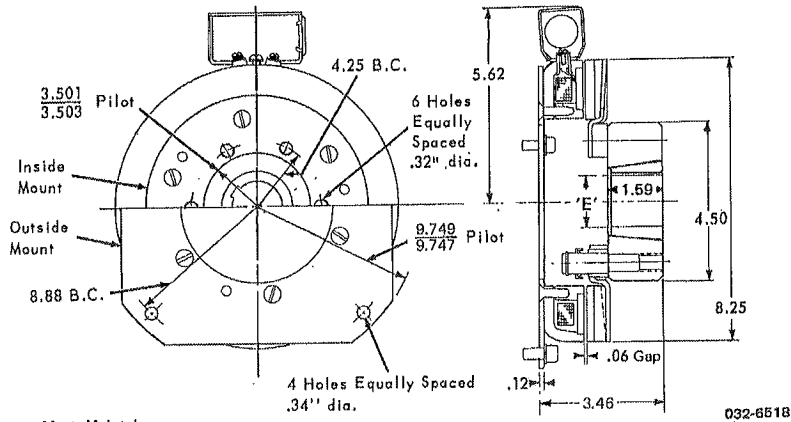
**Technical Data**

Static Torque .....	125 lb. ft.	Weight: Armature, Hub & Split	
Maximum Speed .....	3600 RPM	.. Taper Bushing .....	8.528 lb.
Coil Voltage .....	90 vdc	Field .....	7.65 lb.
Rated Current .....	.59 amp	Inertia: Armature, Hub & Split	
		Taper Bushing .....	.378 lb. ft. <sup>2</sup>

**Model 308 - Torque at Various RPM Points**

RPM	0	300	600	900	1200	1600	1800	2400	3000	3600
Lb. Ft.	125	110	95	85	80	75	67	53	43	36

Refer to Section K for torque and heat dissipation curves.



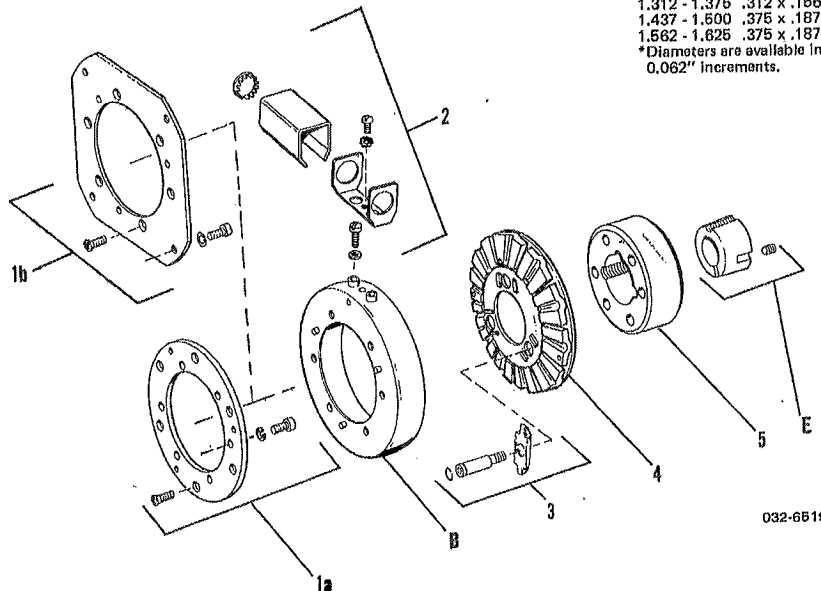
**Customer Must Maintain:**

1. Concentricity between shafts within .010 T.I.R.
2. Angular alignment of shafts within .010 T.I.R.
3. Composite of both within .010 T.I.R.

Refer to Section J for chordal dimensions

*Bore 'E'	Keyway
.500 - .562	.125 x .062
.625 - .875	.187 x .094
.937 - 1.250	.250 x .125
1.312 - 1.375	.312 x .166
1.437 - 1.500	.375 x .187
1.562 - 1.625	.375 x .187

\*Diameters are available in 0.062" increments.





Manufacturers of Dynamic® and Adjusto Spede® Products

7900 Durand Avenue, P.O. Box 0361  
 Sturtevant, Wisconsin, U.S.A. 53177  
 Tel.: 262.554.7977 Fax: 262.554.7041  
 Toll Free: 1.800.548.2169  
 E-mail: sales@drivesourceusa.com  
 Website: www.drivesourceusa.com

**Brake  
 Model 308**

- Primary Field
- Pin Drive

**Model 308 Brake Inside Mounted Per FC-308050**  
**Model 308 Brake Outside Mounted Per FC-308051**

Item	Qty.	Part No.	Description
<b>Major Parts</b>			
1	1	308481	Mounting Plate w/Accessories Inside Mounted
		308491	Outside Mounted
2	1	326078	Brake Magnet Accessories
3	1	326075	Adjustable Gap Accessories
4	1	308380	Armature Plate Assembly
5	1	308450	Armature Hub
B	1		Field Magnet Assembly
B-1		308371	6 volts
B-4		308374	90 volts
E	1	326015	Split Taper Bushing (See note below)
<b>Service Parts</b>			
4a	3	326008	Drive Pin
4b	3	326149	Spring
4c	3	DY 10572	Retaining Ring

**To Order, Specify:**

1. Inside or Outside Mounted Brake
2. Bore of Item E
3. Voltage of Item B
4. Inside or Outside Mounting Plate
5. Controller from Section H

**Example:**

Outside Mounted Brake per FC-308051  
 1½" bore  
 90 volts  
 Outside Mounted  
 Controller Model Number

**Note:**

Refer to Section J for split taper bushing bores.  
 Consult the factory for other voltages.  
 Data subject to change without notice.

*Application Engineering ✦ Quality Products ✦ Total Solution*

**Model 308 Brake Inside Mounted Per FC-308054**  
**Model 308 Brake Outside Mounted Per FC-308055**

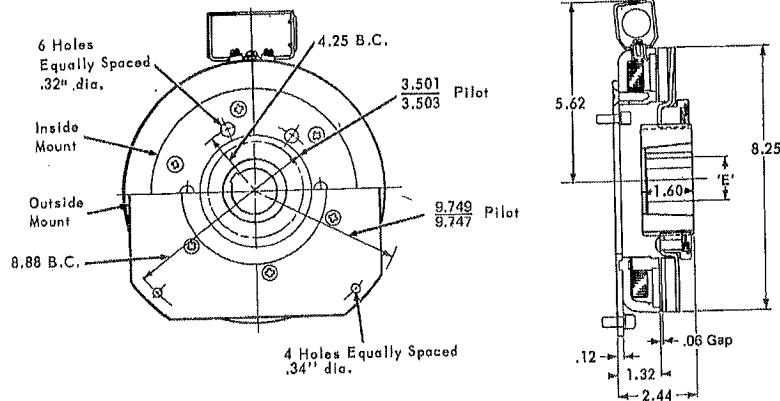
**Technical Data**

Static Torque .....	125 lb. ft.	Weight: Armature, Hub & Split	
Maximum Speed .....	3600 RPM	Taper Bushing .....	7.9 lb.
Coil Voltage .....	90 vdc	Field .....	7.65 lb.
Rated Current .....	.59 amp	Inertia: Armature, Hub & Split	
		Taper Bushing .....	.345 lb. ft. <sup>2</sup>

**Model 308 - Torque at Various RPM Points**

RPM	0	300	600	900	1200	1500	1800	2400	3000	3600
Lb. Ft.	125	110	95	85	80	75	67	53	43	35

Refer to Section K for torque and heat dissipation curves.

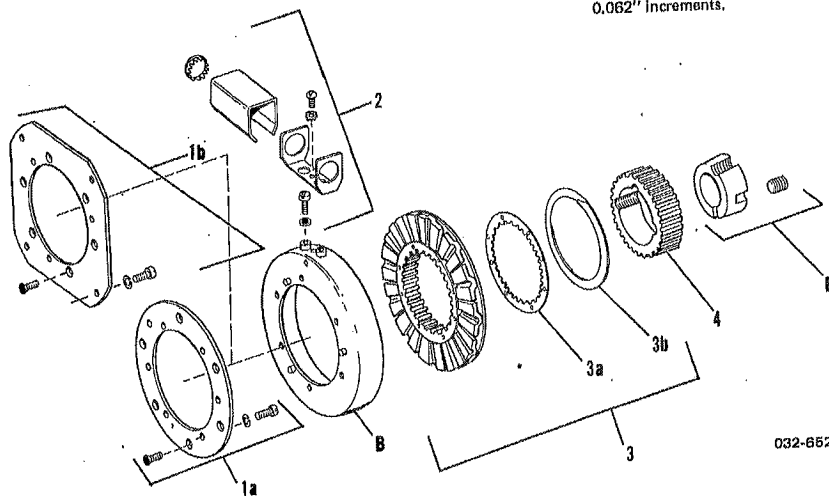


032-6520

**Customer Must Maintain:**

1. Concentricity between shafts within .010 T.I.R.
2. Angular alignment of shafts within .010 T.I.R.
3. Composite of both within .010 T.I.R.

**\*Bore 'E' Keyway**  
 .500 - .562 .125 x .062  
 .625 - .875 .187 x .094  
 .937 - 1.250 .250 x .125  
 1.312 - 1.375 .312 x .156  
 1.437 - 1.500 .375 x .187  
 1.562 - 1.625 .375 x .187  
**\*Diameters are available in 0.062" increments.**



032-6521



Manufacturers of Dynamic® and Adjusto Spede® Products

7900 Durand Avenue, P.O. Box 0361  
 Sturtevant, Wisconsin, U.S.A. 53177  
 Tel.: 262.554.7977 Fax: 262.554.7041  
 Toll Free: 1.800.548.2169  
 E-mail: sales@drivesourceusa.com  
 Website: www.drivesourceusa.com

**Brake  
 Model 308**

- Primary Field
- Spline Drive

**Model 308 Brake Inside Mounted Per FC-308054**  
**Model 308 Brake Outside Mounted Per FC-308055**

Item	Qty.	Part No.	Description
<b>Major Parts</b>			
1	1	308481 308491	Mounting Plate w/Accessories Inside Mounted Outside Mounted
2	1	326078	Brake Magnet Accessories
3	1	308382-4	Armature Plate Assembly
4	1	308680	Armature Hub
B	1		Field Magnet Assembly
B-1		308371	6 volts
B-4		308374	90 volts
E	1	326015	Split Taper Bushing (See note below)
<b>Service Parts</b>			
3a	1	326276	Drag Spring
3b	1	326273	Adjustable Gap Spring

- To Order, Specify:**
1. Inside or Outside Mounted Brake
  2. Bore of Item E
  3. Voltage of Item B
  4. Inside or Outside Mounting Plate
  5. Controller from Section H

- Example:**
- Outside Mounted Brake per FC-308055  
 1½" bore  
 90 volts  
 Outside Mounted  
 Controller Model Number

**Note:**  
 Refer to Section J for split taper bushing bores.  
 Consult the factory for other voltages.  
 Data subject to change without notice.

*Application Engineering ✦ Quality Products ✦ Total Solution*

**Model 310 Brake Inside Mounted Per FC-310050**  
**Model 310 Brake Outside Mounted Per FC-310051**

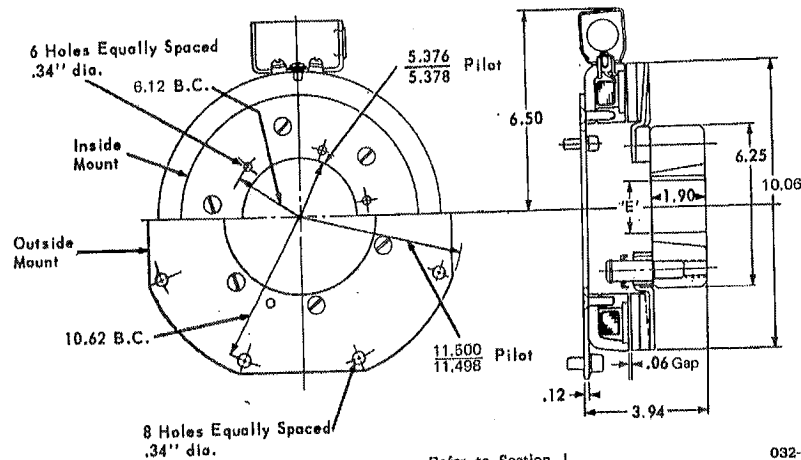
**Technical Data**

Static Torque .....	240 lb. ft.	Weight: Armature, Hub & Split	
Maximum Speed .....	3000 RPM	Taper Bushing .....	14.968 lb.
Coil Voltage .....	90 vdc	Field .....	10.9 lb.
Rated Current .....	.584 amp	Inertia: Armature, Hub & Split	
		Taper Bushing .....	.976 lb. ft. <sup>2</sup>

**Model 310 - Torque at Various RPM Points**

RPM	0	300	600	900	1200	1500	1800	2400	3000
Lb. Ft.	240	200	166	140	115	98	88	72	61

Refer to Section K for torque and heat dissipation curves.



032-6522

**Customer Must Maintain:**

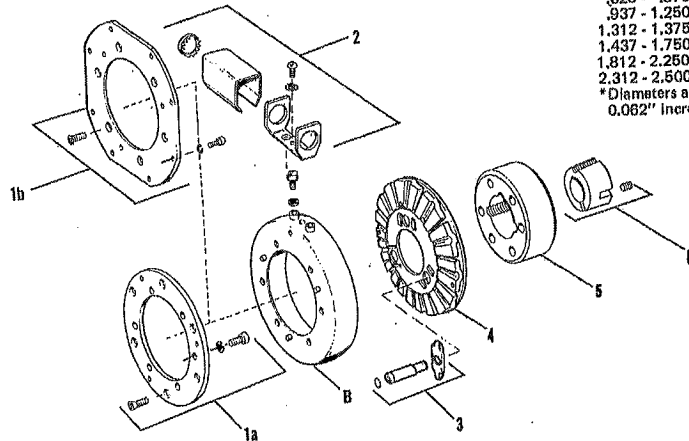
1. Concentricity between shafts within .010 T.I.R.
2. Angular alignment of shafts within .010 T.I.R.
3. Composite of both within .010 T.I.R.

Refer to Section J for chordal dimensions

**\*Bore 'E' Keyway**

.500 - .562	.125 x .062
.625 - .375	.187 x .094
.937 - 1.250	.250 x .125
1.312 - 1.375	.312 x .156
1.437 - 1.750	.375 x .187
1.812 - 2.250	.500 x .250
2.312 - 2.500	.625 x .312

\*Diameters are available in 0.062" increments.



032-6523



Manufacturers of Dynamic® and Adjusto Spede® Products

7900 Durand Avenue, P.O. Box 0361  
Sturtevant, Wisconsin, U.S.A. 53177  
Tel.: 262.554.7977 Fax: 262.554.7041  
Toll Free: 1.800.548.2169  
E-mail: sales@drivesourceusa.com  
Website: www.drivesourceusa.com

**Brake  
Model 310**

- Primary Field
- Pin Drive

**Model 310 Brake Inside Mounted Per FC-310050**  
**Model 310 Brake Outside Mounted Per FC-310051**

Item	Qty.	Part No.	Description
<b>Major Parts</b>			
1	1	310481 310491	Mounting Plate w/Accessories Inside mounted Outside mounted
2	1	326078	Brake Magnet Accessories
3	1	326075	Adjustable Gap Accessories
4	1	310380	Armature Plate Assembly
5	1	310450	Armature Hub
B	1		Field Magnet Assembly
B-1		310371	6 volts
B-4		310374	90 volts
E	1	326039	Split Taper Bushing (See note below)
<b>Service Parts</b>			
3a	3	326008	Drive Pin
3b	3	326149	Spring
3c	3	DY 10572	Retaining Ring

**To Order, Specify:**  
1. Inside or Outside Mounted Brake  
2. Bore of Item E  
3. Voltage of Item B  
4. Inside or Outside Mounting Plate  
5. Controller from Section H

**Example:**  
Outside Mounted Brake per FC-310051  
2" bore  
90 volts  
Outside Mounted  
Controller Model Number

**Note:**  
Refer to Section J for split taper bushing bores.  
Consult the factory for other voltages.  
Data subject to change without notice.

*Application Engineering ✦ Quality Products ✦ Total Solution*

**Model 310 Brake Inside Mounted Per FC-310054**  
**Model 310 Brake Outside Mounted Per FC-310055**

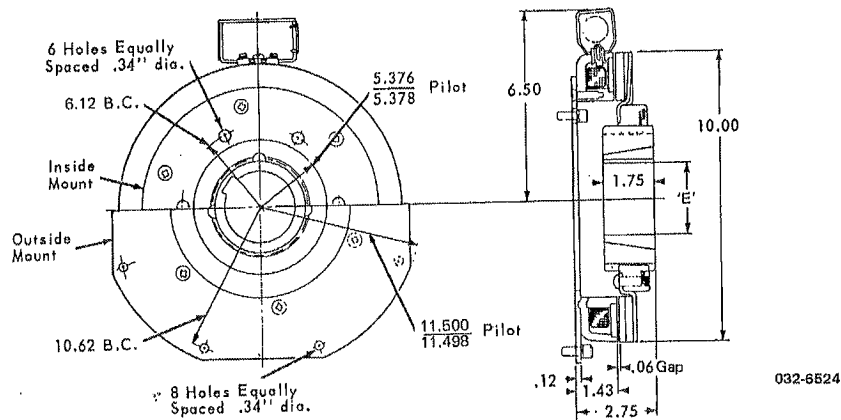
**Technical Data**

Static Torque . . . . .	240 lb. ft.	Weight: Armature, Hub & Split	
Maximum Speed . . . . .	3000 RPM	Taper Bushing . . . . .	14.23 lb.
Coil Voltage . . . . .	90 vdc	Field . . . . .	10.9 lb.
Rated Current . . . . .	.584 amp	Inertia: Armature, Hub & Split	
		Taper Bushing . . . . .	.844 lb. ft. <sup>2</sup>

**Model 310 - Torque at Various RPM Points**

RPM	0	300	600	900	1200	1500	1800	2400	3000
Lb. Ft.	240	200	165	140	115	98	88	72	61

Refer to Section K for torque and heat dissipation curves.



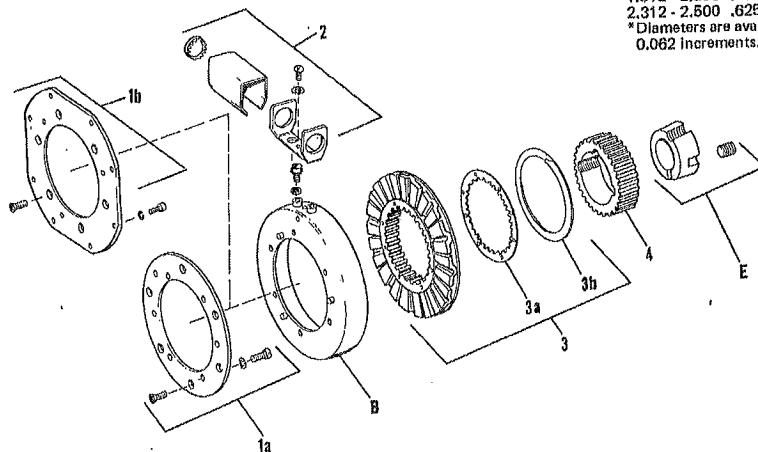
**Customer Must Maintain:**

1. Concentricity between shafts within .010 T.I.R.
2. Angular alignment of shafts within .010 T.I.R.
3. Composite of both within .010 T.I.R.

\*Bore 'E' Keyway

.500 - .562	.125 x .062
.625 - .875	.187 x .094
.937 - 1.250	.250 x .125
1.312 - 1.375	.312 x .156
1.437 - 1.750	.375 x .187
1.812 - 2.250	.500 x .250
2.312 - 2.500	.625 x .312

\*Diameters are available in 0.062 increments.



032-6525

**Brake  
 Model 310**

- Primary Field
- Spline Drive

**Model 310 Brake Inside Mounted Per FC-310054**  
**Model 310 Brake Outside Mounted Per FC-310055**

Item	Qty.	Part No.	Description
<b>Major Parts</b>			
1	1	310481	Mounting Plate w/Accessories Inside mounted
		310491	Outside mounted
2	1	326078	Brake Magnet Accessories
3	1	310383-4	Armature Plate Assembly
4	1	310680	Armature Hub
B	1		Field Magnet Assembly
B-1		310371	6 volts
B-4		310374	90 volts
E	1	326039	Split Taper Bushing (See note below)
<b>Service Parts</b>			
3a	1	326277	Drag Spring
3b	1	326274	Adjustable Gap Spring

**To Order, Specify:**  
 1. Inside or Outside Mounted Brake  
 2. Bore of Item E  
 3. Voltage of Item B  
 4. Inside or Outside Mounting Plate  
 5. Controller from Section H

**Example:**  
 Outside Mounted Brake per FC-310055  
 2" bore  
 90 volts  
 Outside Mounted  
 Controller Model Number

**Note:**  
 Refer to Section J for split taper bushing bores.  
 Consult the factory for other voltages.  
 Data subject to change without notice.

**Model 312 Brake Inside Mounted Per FC-312050**  
**Model 312 Brake Outside Mounted Per FC-312051**

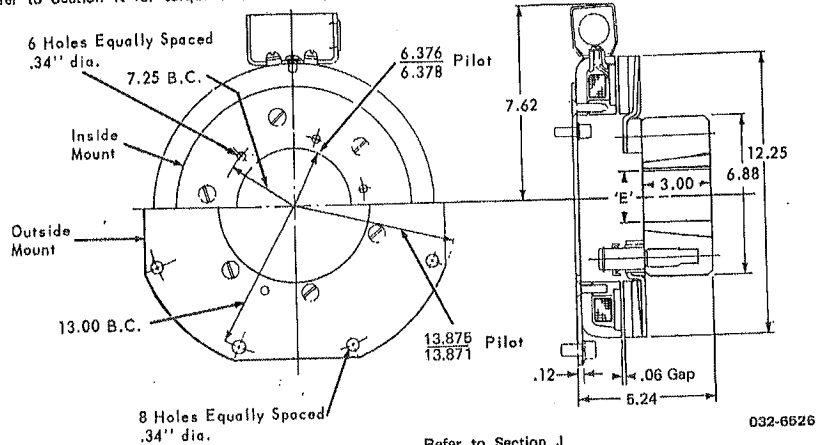
**Technical Data**

Static Torque . . . . .	465 lb. ft.	Weight: Armature, Hub & Split
Maximum Speed . . . . .	2400 RPM	Taper Bushing . . . . .
Coil Voltage . . . . .	90 vdc	Field . . . . .
Rated Current . . . . .	.520 amp	Inertia: Armature, Hub & Split
		Taper Bushing . . . . .

**Model 312 - Torque at Various RPM Points**

RPM	0	300	600	900	1200	1500	1800	2400
Lb. Ft.	465	380	300	240	190	155	140	130

Refer to Section K for torque and heat dissipation curves.



**Customer Must Maintain:**

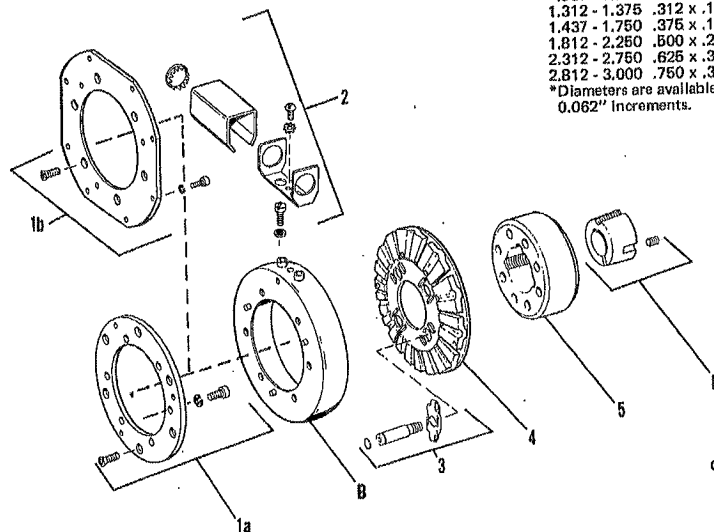
1. Concentricity between shafts within .010 T.I.R.
2. Angular alignment of shafts within .010 T.I.R.
3. Composite of both within .010 T.I.R.

Refer to Section J for chordal dimensions

\*Bore 'E' Keyway

.937 - 1.250	.250 x .125
1.312 - 1.375	.312 x .156
1.437 - 1.750	.375 x .187
1.812 - 2.250	.500 x .250
2.312 - 2.750	.625 x .312
2.812 - 3.000	.750 x .375

\*Diameters are available in 0.062" increments.





Manufacturers of Dynamic® and Adjusto Spede® Products

7900 Durand Avenue, P.O. Box 0361  
 Sturtevant, Wisconsin, U.S.A. 53177  
 Tel.: 262.554.7977 Fax: 262.554.7041  
 Toll Free: 1.800.548.2169  
 E-mail: sales@drivesourceusa.com  
 Website: www.drivesourceusa.com

**Brake  
 Model 312**

- Primary Field
- Pin Drive

**Model 312 Brake Inside Mounted Per FC-312050**  
**Model 312 Brake Outside Mounted Per FC-312051**

Item	Qty.	Part No.	Description
<b>Major Parts</b>			
1	1		Mounting Plate w/Accessories
1a		312481	Inside mounted
1b		312491	Outside mounted
2	1	326078	Brake Magnet Accessories
3	1	326139	Adjustable Gap Accessories
4	1	312380	Armature Plate Assembly
5	1	312450	Armature Hub
B	1		Field Magnet Assembly
B-1		312371	6 volts
B-4		312374	90 volts
E	1	326046	Split Taper Bushing (See note below)
<b>Service Parts</b>			
3a	4	326008	Drive Pin
3b	4	326149	Spring
3c	4	DY 10572	Retaining Ring

- To Order, Specify:**
1. Inside or Outside Mounted Brake
  2. Bore of Item E
  3. Voltage of Item B
  4. Inside or Outside Mounting Plate
  5. Controller from Section H

- Example:**
- Outside Mounted Brake per FC-312051  
 2" bore  
 90 volts  
 Outside Mounted  
 Controller Model Number

**Note:**  
 Refer to Section J for split taper bushing bores.  
 Consult the factory for other voltages.  
 Data subject to change without notice.

*Application Engineering ✦ Quality Products ✦ Total Solution*

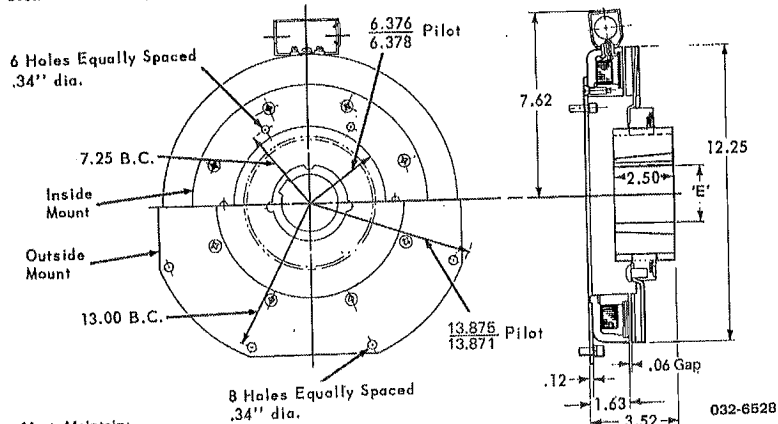
**Model 312 Brake Inside Mounted Per FC-312054**  
**Model 312 Brake Outside Mounted Per FC-312055**

<b>Technical Data</b>		Weight: Armature, Hub & Split
Static Torque .....	465 lb. ft.	Taper Bushing .....
Maximum Speed .....	2400 RPM	Field .....
Coil Voltage .....	90 vdc	Inertia: Armature, Hub & Split
Rated Current .....	.520 amp	Taper Bushing .....
		1.813 lb. ft. <sup>2</sup>

**Model 312 - Torque at Various RPM Points**

RPM	0	300	600	900	1200	1500	1800	2400
Lb. Ft.	465	380	300	240	190	155	140	130

Refer to Section K for torque and heat dissipation curves.



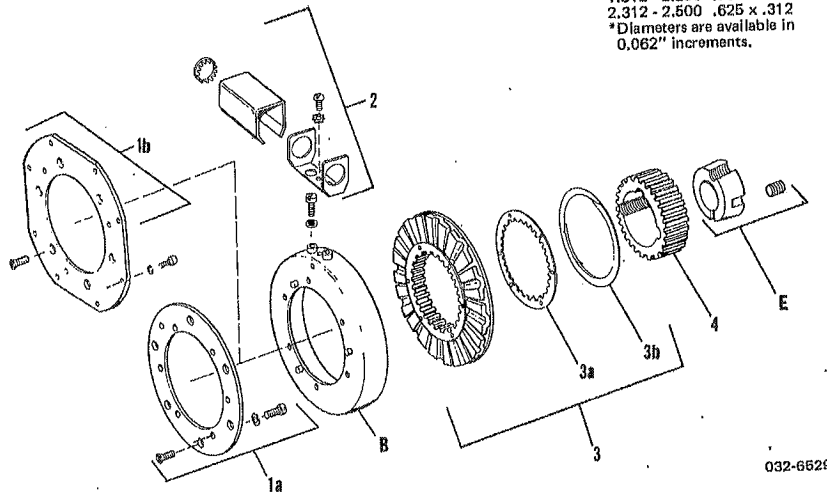
**Customer Must Maintain:**

1. Concentricity between shafts within .010 T.I.R.
2. Angular alignment of shafts within .010 T.I.R.
3. Composite of both within .010 T.I.R.

\*Bore 'E' Keyway

.750 - .875	.187 x .094
.937 - 1.250	.250 x .125
1.312 - 1.375	.312 x .156
1.437 - 1.750	.375 x .187
1.812 - 2.250	.500 x .250
2.312 - 2.500	.625 x .312

\*Diameters are available in 0.062" increments.





Manufacturers of Dynamic® and Adjusto Spede® Products

7900 Durand Avenue, P.O. Box 0361  
Sturtevant, Wisconsin, U.S.A. 53177  
Tel.: 262.554.7977 Fax: 262.554.7041  
Toll Free: 1.800.548.2169  
E-mail: sales@drivesourceusa.com  
Website: www.drivesourceusa.com

**Brake  
Model 312**

- Primary Field
- Spline Drive

**Model 312 Brake Inside Mounted Per FC-312054**  
**Model 312 Brake Outside Mounted Per FC-312055**

Item	Qty.	Part No.	Description
<b>Major Parts</b>			
1	1		Mounting Plate w/Accessories
1a		312481	Inside mounted
1b		312491	Outside mounted
2	1	326078	Brake Magnet Accessories
3	1	312383-4	Armature Plate Assembly
4	1	312680	Armature Hub
B	1		Field Magnet Assembly
B-1		312371	6 volts
B-4		312374	90 volts
E	1	326241	Split Taper Bushing (See note below)
<b>Service Parts</b>			
3a	1	326278	Drag Spring
3b	1	326275	Adjustable Gap Spring

- To Order, Specify:**
1. Inside or Outside Mounted Brake
  2. Bore of Item E
  3. Voltage of Item B
  4. Inside or Outside Mounting Plate
  5. Controller from Section H

- Example:**
- Outside Mounted Brake per FC-312055  
2" bore  
90 volts  
Outside Mounted  
Controller Model Number

**Note:**  
Refer to Section J for split taper bushing bores.  
Consult the factory for other voltages.  
Data subject to change without notice.

*Application Engineering ✦ Quality Products ✦ Total Solution*

### Model 315 Brake Inside Mounted Per FC-315050

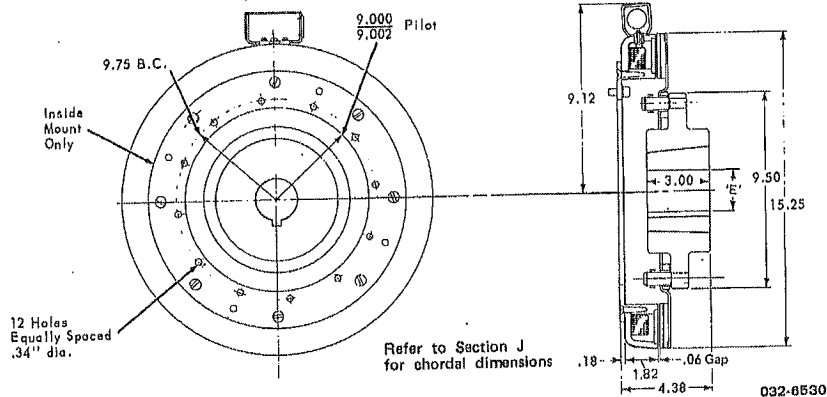
#### Technical Data

Static Torque .....	700 lb. ft.	Weight: Armature, Hub & Split	
Maximum Speed .....	1800 RPM	Taper Bushing .....	32.974 lb.
Coil Voltage .....	90 vdc	Field .....	27.25 lb.
Rated Current .....	.332 amp	Inertia: Armature, Hub & Split	
		Taper Bushing .....	4.381 lb. ft. <sup>2</sup>

#### Model 315 - Torque at Various RPM Points

RPM	0	300	600	900	1200	1500	1800
Lb. Ft.	700	530	400	315	260	215	180

Refer to Section K for torque and heat dissipation curves.

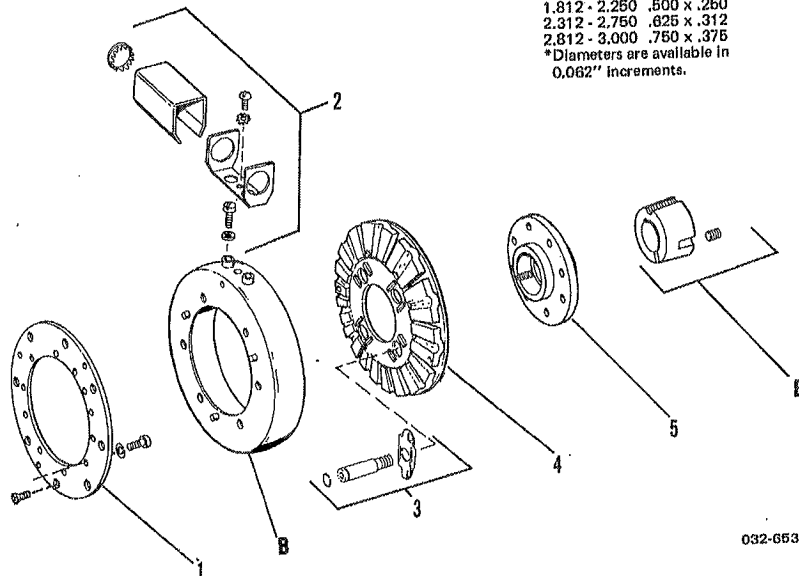


#### Customer Must Maintain:

1. Concentricity between shafts within .010 T.I.R.
2. Angular alignment of shafts within .010 T.I.R.
3. Composite of both within .010 T.I.R.

*Bore 'E'	Keyway
.937 - 1.250	.250 x .125
1.312 - 1.375	.312 x .156
1.437 - 1.750	.375 x .187
1.812 - 2.250	.500 x .250
2.312 - 2.750	.625 x .312
2.812 - 3.000	.750 x .375

\*Diameters are available in 0.062" increments.



**Brake  
 Model 315**

- Primary Field
- Pin Drive

**Model 315 Brake Inside Mounted Per FC-315050**

Item	Qty.	Part No.	Description
<b>Major Parts</b>			
1	1	315481	Inside Mounting Plate w/Accessories
2	1	326078	Brake Magnet Accessories
3	1	326139	Adjustable Gap Accessories
4	1	315380	Armature Plate Assembly
5	1	315450	Armature Hub
B	1		Field Magnet Assembly
B-1		315371	6 volts
B-4		315374	90 volts
E	1	326046	Split Taper Bushing (See note below)
<b>Service Parts</b>			
3a	4	326008	Drive Pin
3b	4	326149	Spring
3c	4	DY 10572	Retaining Ring

**To Order, Specify:**  
 1. Inside Mounted Brake  
 2. Bore of Item E  
 3. Voltage of Item B  
 4. Controller from Section H

**Example:**  
 Inside Mounted Brake per FC-315050  
 1½" bore  
 90 volts  
 Controller Model Number

**Note:**  
 Refer to Section J for split taper bushing bores.  
 Consult the factory for other voltages.  
 Data subject to change without notice.

### Model 315 Brake Inside Mounted Per FC-315054

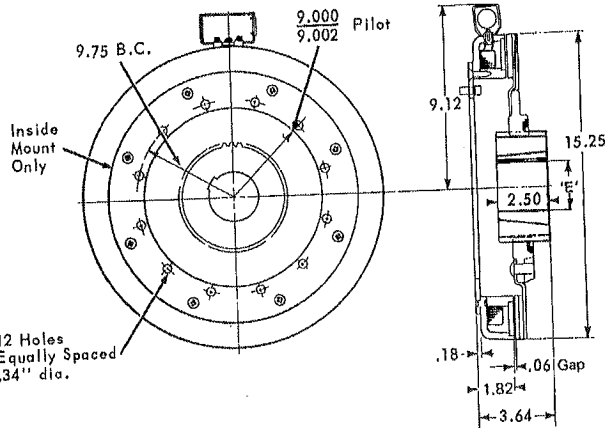
#### Technical Data

Static Torque . . . . .	700 lb. ft.	Weight: Armature, Hub & Split	
Maximum Speed . . . . .	1800 RPM	Taper Bushing . . . . .	31.98 lb.
Coil Voltage . . . . .	90 vdc	Field . . . . .	27.25 lb.
Rated Current . . . . .	.332 amp	Inertia: Armature, Hub & Split	
		Taper Bushing . . . . .	3.883 lb. ft. <sup>2</sup>

#### Model 315 - Torque at Various RPM Points

RPM	0	300	600	900	1200	1500	1800
Lb. Ft.	700	630	400	315	260	215	180

Refer to Section K for torque and heat dissipation curves.



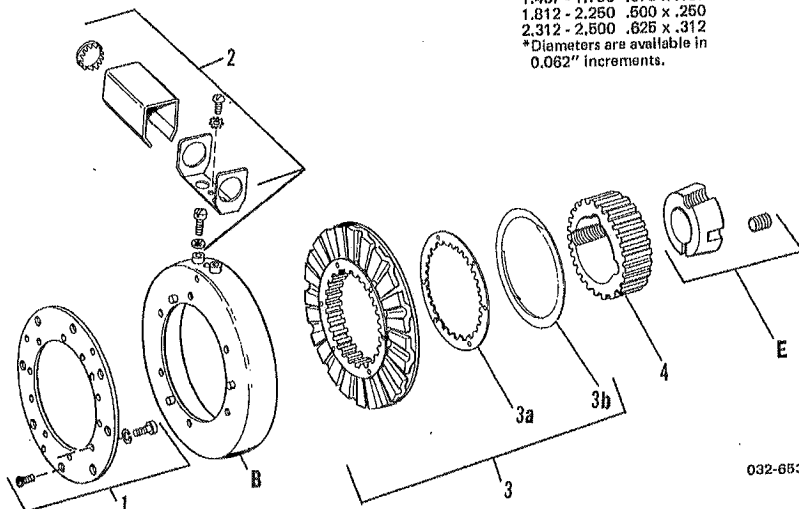
#### Customer Must Maintain:

1. Concentricity between shafts within .010 T.I.R.
2. Angular alignment of shafts within .010 T.I.R.
3. Composite of both within .010 T.I.R.

\*Bore "E" Keyway

.760 - .875	.187 x .094
.937 - 1.250	.250 x .125
1.312 - 1.375	.312 x .156
1.437 - 1.750	.375 x .187
1.812 - 2.250	.500 x .250
2.312 - 2.500	.625 x .312

\*Diameters are available in 0.062" increments.





Manufacturers of Dynamic® and Adjusto Spede® Products

7900 Durand Avenue, P.O. Box 0361  
Sturtevant, Wisconsin, U.S.A. 53177  
Tel.: 262.554.7977 Fax: 262.554.7041  
Toll Free: 1.800.548.2169  
E-mail: sales@drivesourceusa.com  
Website: www.drivesourceusa.com

**Brake  
Model 315**

- Primary Field
- Spline Drive

**Model 315 Brake Inside Mounted Per FC-315054**

Item	Qty.	Part No.	Description
<b>Major Parts</b>			
1	1	315481	Inside Mounting Plate w/Accessories
2	1	326078	Brake Magnet Accessories
3	1	315382-4	Armature Plate Assembly
4	1	312680	Armature Hub
B	1		Field Magnet Assembly
B-1		315371	6 volts
B-4		315374	90 volts
E	1	326241	Split Taper Bushing (See note below)
<b>Service Parts</b>			
3a	4	326278	Drag Spring
3b	4	326275	Adjustable Gap Spring

- To Order, Specify:**
1. Inside Mounted Brake
  2. Bore of Item E
  3. Voltage of Item B
  4. Controller from Section H

**Example:**  
 Inside Mounted Brake per FC-315054  
 1½" bore  
 90 volts  
 Controller Model Number

**Note:**  
 Refer to Section J for split taper bushing bores.  
 Consult the factory for other voltages.  
 Data subject to change without notice.

*Application Engineering ✦ Quality Products ✦ Total Solution*