

**"DCD" Ajusto-Spede® Drives  
3 through 75 HP**

**MODELS DCD-132 THROUGH DCD-225 DRIVES  
Ordering Information**



**Description**

Dynamatic® Model DCD Drives is a combination of an air-cooled, adjustable speed clutch and a flange mounted AC induction motor. Simple low cost dependability. Interchangeable with Models TCD and CD. Consult factory for more details. The DCD Drive transmits torque at variable speeds. There is no physical contact between input and output members. This results in smooth response, thereby eliminating shock loading and extending equipment life. All

drives have an integral tachometer generator mounted around the output shaft to provide a feedback signal to the drive's controller. The controller provides the DC excitation for the clutch coil. The feedback signal from the tachometer generator is used as a reference signal within the controller to maintain accurate speed regulation. The controllers for the drives are described in the Product Catalog.

Features	Customer Benefits
Simple, rugged, reliable	Long life cycle.
Operates in hostile environments.	Lower maintenance costs.
No routine maintenance.	Worry free operation.
New improved torque tube.	High torque output.
Three-year warranty on DCD mechanical units.	Lower operating costs.
Aggregate/asphalt duty.	Dependable and reliable.
Self-cleaning rotor.	Dirt/dust free operation.
Standard design.	Replacements for competition.
Interchangeable parts.	Parts cost less, directly interchangeable with competition.

**"DCD" Ajusto-Spede® Drives  
3 through 75 HP**

**Specifications for DCD-132 Through DCD-225 Drives**

<b>Motor</b>	HP and RPM Totally Enclosed Fan Cooled (TEFC) NEMA Design B Class F insulation, Class B rise 1.15 service factor Input power Three-year warranty	See selection table Standard Standard Standard Standard 230/460V, 3 Phase, 60 Hz - Standard Standard
<b>Clutch</b>	Stationary coil Coil voltages Rated for constant torque Starting torque Intermittent torque AC tachometer generator Cooling Three-year warranty	Standard 90 VDC - Standard; 45 VDC - Optional Standard Approximately 250% Approximately 250% Standard 100% self ventilated Standard
<b>Controllers (Sold Separately)</b>	Model DSI-600, EC-2000 and PDC-2000 Closed loop speed control Speed regulation Regulated speed range Input power  Enclosure Panel mount, open construction Output voltage, to clutch coil One-year warranty	Can be used with DCD-132 through DCD-225 Standard 0.5% Standard; 0.1% Optional (EC-2000 only) 34 to 1 available Line transformer (sold separately) - <b>motor winding transformer not available</b> NEMA 1 - Standard; NEMA 12 - Optional Optional 90 VDC Standard
<b>Status Indication</b>	Speed indicating signal	0-60 VAC from tachometer generator for optional meter
<b>Environmental Ratings</b>	Storage temperature Operating temperature Maximum operating temperature Altitude	-20° to 65° C (-4° to 149° F) Standard 0° to 40° C (32° to 104° F) Standard 65° C (De-rating required) 1000 m (3300 Ft.) Standard
<b>Codes and Standards</b>	Mechanical NEMA, as applicable Mechanical CSA Controllers CSA	Standard Approved Approved
<b>Reliability Testing</b>	Mechanical 100% dynamometer tested Controllers Pre-tested components Computer test and pre-calibrated PCBs	Standard  Standard Standard

**"DCD" Ajusto-Spede® Drives  
3 through 75 HP**

**Product Information**

The simple low cost Model DCD drive includes a TEFC AC induction motor, with 230/460/575 VAC, 3 phase, 60 Hz input, The C-face motor is flange mounted to the maintenance free eddy-current coupling. The DCD Drive can produce up to 300% starting torque and can operate with several Dynamatic® speed controllers. The DCD Models are interchangeable with higher priced TCD, or CD models. Contact the factory for more details.

A controller is required, but not included. A Drive/Controller Compatibility and Selection Chart can be found in the Product Catalog. Description of controllers, modifications and operator stations can also be found in the Product Catalog.

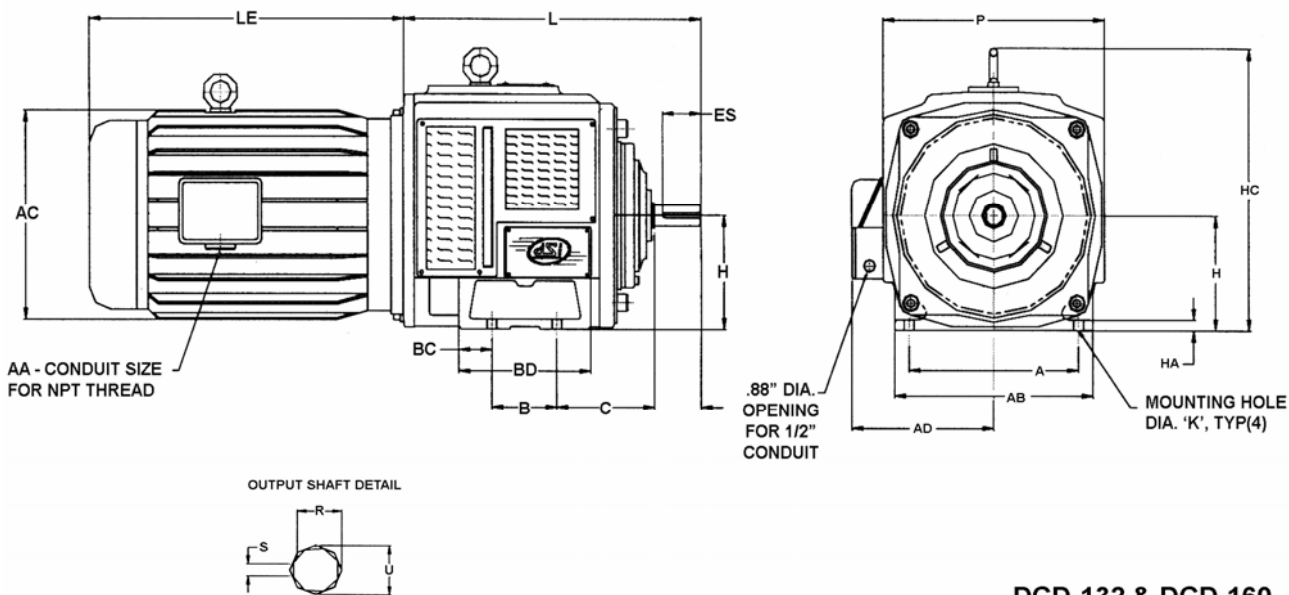
**Selection Table - 60 Hz**

HP	Speed Range (RPM)	Model Number	Motor Frame Size	Poles	Torque (Lb. Ft.)
3	0-1630	DCD-132030-4141	182TC	4	9.2
5	0-1500	DCD-132050-4141	184TC	4	15.0
5	0-3300	DCD-132050-4121	184TC	2	7.5
7.5	0-3300	DCD-132075-4121	213TC	2	11.3
10	0-3250	DCD-132100-4121	215TC	2	15.3
7.5	0-1630	DCD-160075-4141	213TC	4	22.5
10	0-1580	DCD-160100-4141	215TC	4	30.0
15	340-1550	DCD-160150-4141	254TC	4	45.0
15	0-3300	DCD-160150-4121	254TC	2	22.5
20	0-3250	DCD-160200-4121	256TC	2	30.3
25	640-3250	DCD-160250-4121	284TSC	2	37.8
15	0-1655	DCD-180150-4141	254TC	4	45.0
20	145-1615	DCD-180200-4141	256TC	4	60.0
25	450-1600	DCD-180250-4141	284TC	4	75.5
25	0-3350	DCD-180250-4121	284TSC	2	37.6
30	660-1545	DCD-180300-4141	286TC	4	90.0
30	0-3350	DCD-180300-4121	286TSC	2	45.0
30	0-1655	DCD-225300-4141	286TC	4	90.1
40	300-1635	DCD-225400-4141	324TC	4	120.4
50	690-1625	DCD-225500-4141	326TC	4	150.9
60	782-1545	DCD-225600-4141	364TC	4	180.0
75	1050-1515	DCD-225750-4141	365TC	4	212.0

**\*\*\*Consult Factory for Options and competition comparison chart.**

"DCD" Ajusto-Spede® Drives  
3 through 75 HP

Outline Drawings – DCD-132 & DCD-160



DCD-132 & DCD-160

Model	Poles	Max Speed (RPM)	Motor Power (HP)	Wt. Lbs.	Overall & Mounting Dimensions												
					A	B	C	H	K	AB	AD	BD	BC	HA	HC	L	L <sup>●</sup>
DCD-132	4	1630-0	3	232	8.50	3.15	4.84	5.20	.50	10.63	6.90	6.25	1.50	.56	13.00	14.7	14.7
	4	1500-0	5	247													
	2	3300-0	5	249													
	2	3300-0	7.5	286													
	2	3250-0	10	300													
DCD-160	4	1630-0	7.5	475	10.0	3.935	3.86	6.299	.59	12.80	8.55	11.03	5.14	.55	15.00	17.2	21.26
	4	1580-0	10	498													
	4	1550-340	15	590													
	2	3300-0	15	582													
	2	3250-0	20	625													
	2	3250-640	25	760													

Model	Hp	Frame	AC	LE	AA	2E	2F	KK
DCD-132	3	182TC	8.8	13.65	.75	--	--	--
	5	184TC	8.8	14.50	.75	--	--	--
	7.5	213TC	10.25	15.00	1.00	--	--	--
	10	215TC	10.25	16.25	1.00	--	--	--
DCD-160	7.5	213TC	10.25	15.00	1.00	8.50	5.50	.41
	10	215TC	10.25	15.00	1.00	8.50	7.00	.41
	15	254TC	12.70	19.25	1.25	10.00	8.25	.53
	20	256TC	12.70	19.75	1.25	10.00	10.00	.53
	25	284TC	14.50	23.00	1.25	11.00	9.50	.53

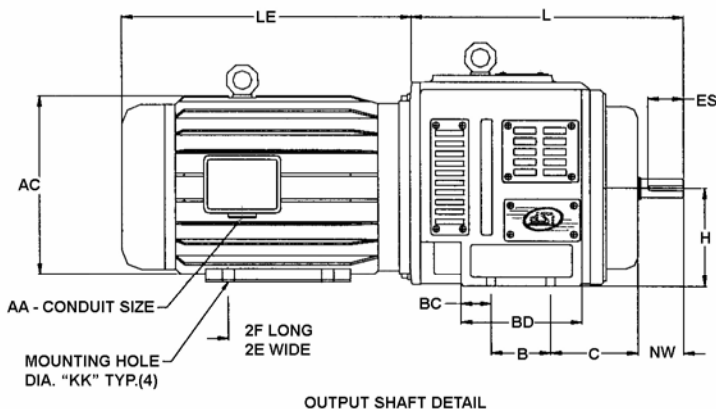
Output Shaft Data					
Model	ES	NW	U	S	R
DCD-132	1.75	2.75	1.125	.25	.987
DCD-160	2.375	3.375	1.375	.3125	1.201

Notes:

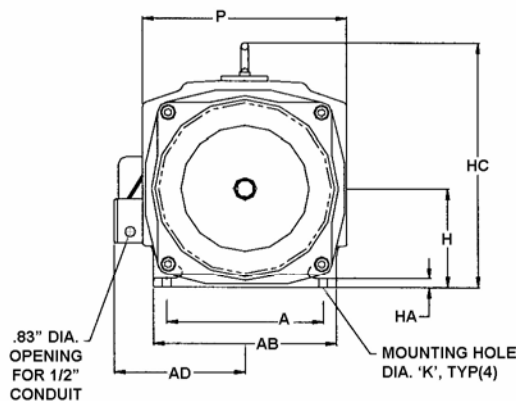
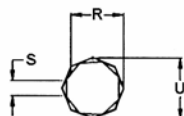
- Terminal box mounting is optional on right or left side.
- Totally enclosed covers are available for several models.
- Alternate flanges are available for basic and free standing models (see following pages).
- Weight is approximate and includes motor.
- Dimension includes flange (see following pages).

**"DCD" Ajusto-Spede® Drives  
3 through 75 HP**

**Outline Drawings – DCD-180 & DCD-225**



OUTPUT SHAFT DETAIL



**DCD-180 & DCD-225**

Model	Poles	Max Speed (RPM)	HP	Wt. Lbs.	Overall & Mounting Dimensions												
					A	B	C	H	K	AB	AD	BC	BD	HA	HC	L	L⊙
DCD-180	4	1655-0	15	670	11.00	4.72	4.06	7.087	.59	15.4	10.2	2.05	8.98	.87	14.4	19.3	23.4
	4	1615-145	20	722										.87	15.75		
	4	1600-450	25	900										.87	15.75		
	4	1545-660	30	916										.87	15.75		
	2	3350-0	25	828										.87	14.4		
	2	3350-0	30	844										1.65	14.4		
	2	3350-800	40	870										1.65	14.4		
DCD-225	4	1655-0	30	1470	14.02	7.28	7.28	8.86	.72	18.90	16.02	2.44	12.16	1.97	19.00	27.2	27.2
	4	1635-300	40	1585						18.90	16.02			1.97			
	4	1625-690	50	1672						18.90	16.54			3.15			
	4	1545-782	60	1860						19.00	11.10			.98			
	4	1515-1050	75	2030						19.00	11.81			.98			

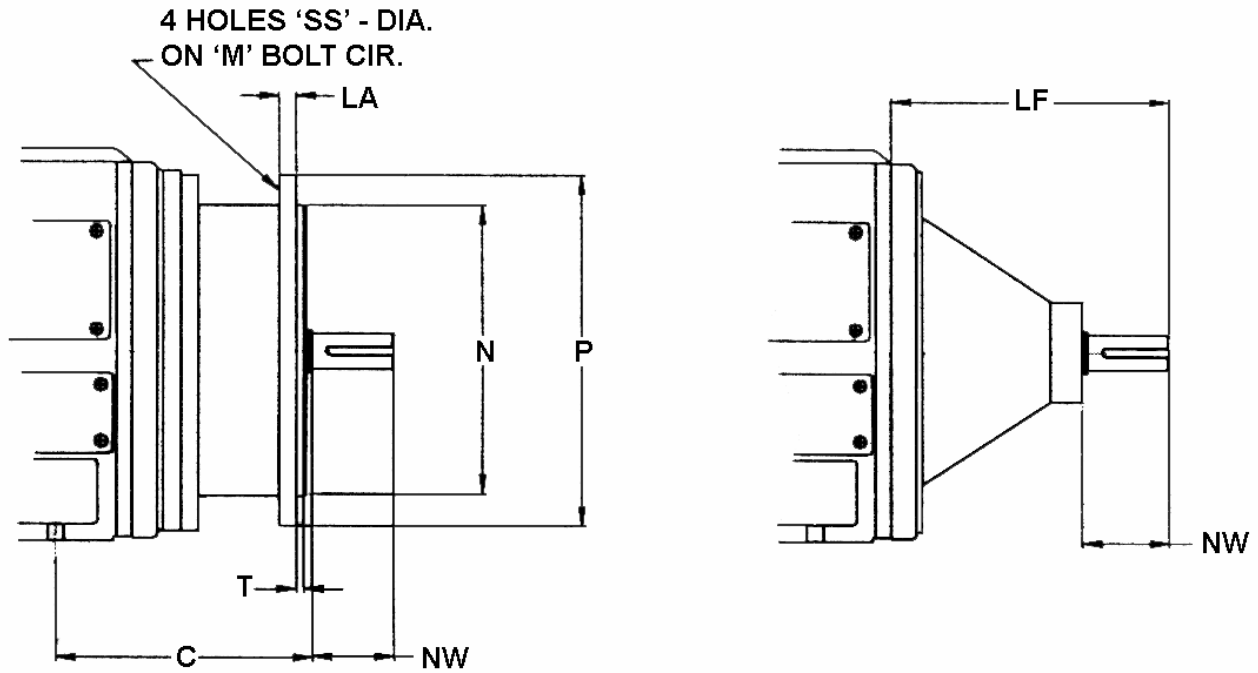
Model	HP	Frame	AC	LE	AA	2E	2F	KK
DCD-180	15	254TC	13.0	19.5	1.25	10.00	8.27	.6
	20	256TC	13.0	19.5	1.25	10.00	10.0	.6
	25	284TC	14.72	22.5	1.50	11.00	11.0	.6
	30	286TC	14.72	22.5	1.50	11.00	11.0	.6
	25	284TC	13.0	22.5	1.50	11.16	9.50	.6
	30	286TC	11.8	25.6	2.00	12.50	12.0	.75
	40	324TC	11.8	25.6	2.00	12.50	12.0	.75
DCD-225	50	326TC	11.8	29.5	2.00	12.50	12.0	.75
	30	286TC	14.72	22.00	1.5	11.00	11.00	.71
	40	324TC	16.61	25.20	2.0	12.52	12.00	.71
	50	326TC	18.66	26.25	2.0	14.00	11.26	.71
60	364TC	18.66	27.25	2.0	14.00	12.24	.71	
75	365TC	21.00	29.60	2.0	16.00	12.24	.71	

Output Shaft Data					
Model	ES	NW	U	S	R
DCD-180	3.25	4.33	1.875	.500	1.591
DCD-225	4.33	5.875	2.375	.625	2.021

**Notes:**  
 Terminal box mounting is optional on right or left side.  
 Totally enclosed covers are available for several models.  
 Alternate flanges are available for basic and free standing models (see following pages).  
 Weight is approximate and includes motor.  
 ● Dimension includes flange (see following pages).

"DCD" Ajusto-Spede® Drives  
3 through 75 HP

Alternate Flange Outline Dimensions



Model	C	LA	LF	M	N	P	T	NW	SS
DCD-132	4.84	.74	7.4	6.10	8.46	9.84	.16	2.75	.6
DCD-160	7.87	.63	8.74	10.43	9.06	14.0	.16	3.375	.6
DCD-180	8.18	.63	9.53	11.81	9.842	13.8	.2	4.33	.75
DCD-225	7.28	.98	13.96	13.78	11.81	18.5	.20	5.875	.75

DIMENSIONS ARE IN INCHES